

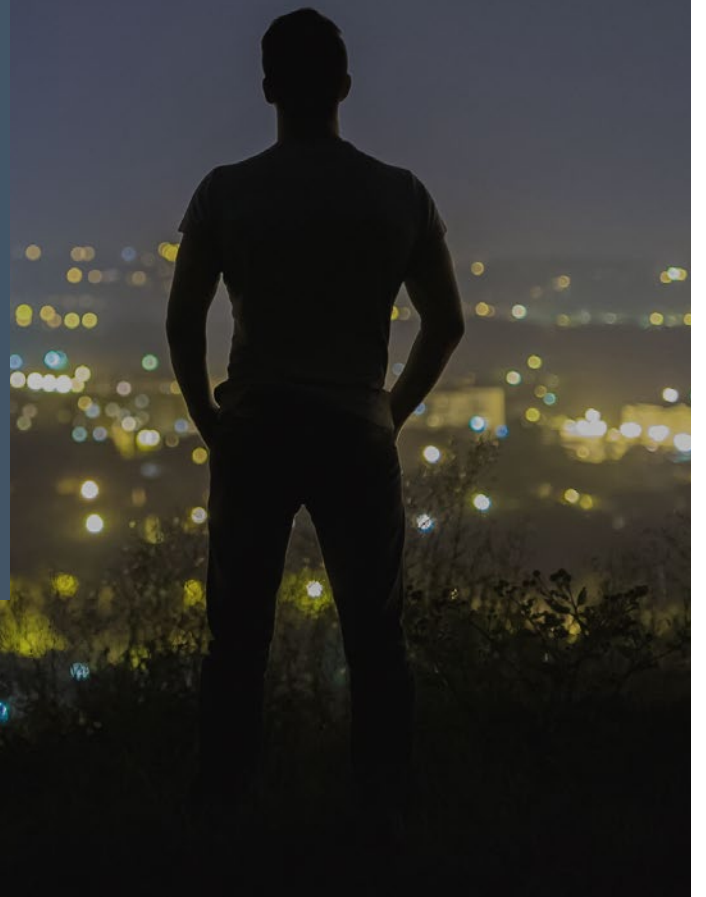
FREE ASSESSMENT

Free Application Visibility Assessment with Infovista

What keeps you up at night?

- Poor end user experience and dissatisfied employees complaining about poor application performance to your help desk?
- Do you worry about adding cloud applications to your network and how quality of experience will be impacted?
- Do you know how much bandwidth your applications consume in your network and their performance?

Infovista is here to help with a free Application Visibility Assessment to give you the visibility and understanding you need



Offer details

WE'RE OFFERING A FREE APPLICATION ASSESSMENT

Infovista will monitor your network for a period of 2-4 weeks and present back to you a FREE assessment report. The report will explain the performance and health of the applications in your network to allow you to make informed network decisions in the future.

GET 100% VISIBILITY INTO YOUR NETWORK NOW

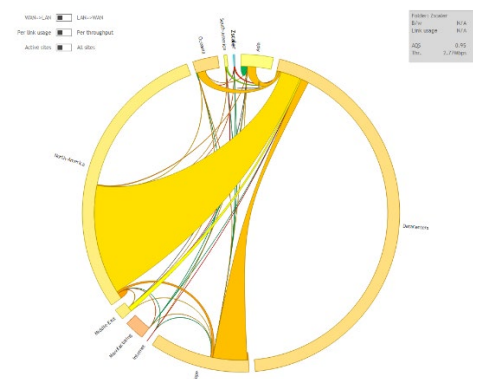
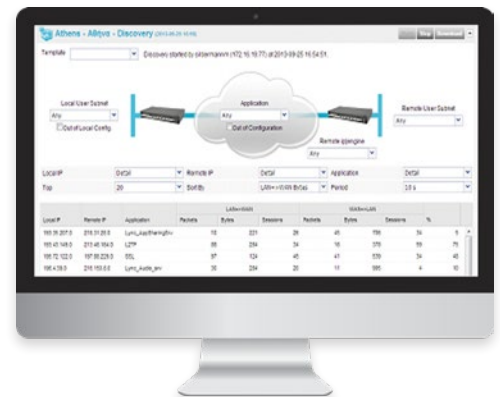
Request a FREE assessment and get 100% visibility of the issues in your enterprise network.

Email us at info@infovista.com

The Ipanema system identifies applications and computes metrics for all IP packets going through physical or virtual appliances, deployed in data centers and branch offices.

The data is collected and stored centrally, to be delivered through real-time dashboards and historical reports. Ipanema's Application Visibility is built with several components:

- **DEEP PACKET INSPECTION** recognizes and classifies all business and recreational applications, (via Layer 7 attributes).
- **NETWORK METRICS** represent traffic volume (throughput, sessions) and other performance metrics (one-way delay, jitter, loss, RTT, Server Response Time, TCP Retransmit) for each application flow, from WAN-to-WAN and LAN-to-LAN. In addition, standardized MOS (Mean Opinion Score) is available to evaluate VoIP and voice codecs.
- **APPLICATION QUALITY SCORE (AQS)** enables enterprises to see how application performance is perceived by end users and how it is aligned with business objectives. The score is a weighted mean calculation, which is computed by comparing measured metrics with predefined APOs (Application Performance Objectives).
- **USAGE METRICS AND SERVICE-LEVEL METRICS** correlate volumes with applications, quality evolution, and percentage of the time in which SLAs are met in a specific branch or application.
- **REAL-TIME DASHBOARD** provides an instantaneous view of network and application conditions. Historical reports can also be viewed with aggregation of data per month, per week, per day or per hour.
- **METAVIEWS AND TAGS** provide consolidated reports and network views by grouping hybrid links, appliances, sites and applications, which is particularly useful for complex network environments.
- **DISCOVERY TOOLS** expedite incident resolution via drill-down from Ipanema Application Flows to Application Conversations detailing all Application performance metrics between pairs of end-points for a given application across the WAN.
- **CLOUD APPLICATION MONITORING** provides a powerful set of reports, including application usage and quality metrics, allowing the enterprise to monitor performance and differentiate issues between corporate network segments, SaaS provider segments and CSP segments.
- **APPLICATION FLOWS MAP** provides a bird's-eye view – in real-time – that enables a top-down approach to understand peer-to-peer flow topologies, such as Unified Communications and SaaS.



Terms and Conditions

Infovista reserves the right to change the terms of the Offer at its sole discretion and terminate the Offer at any time without notice. Upon the end of the free assessment, Infovista shall cease the assessment service and remove the ip engines (hardware delivered for the purpose of the free assessment).