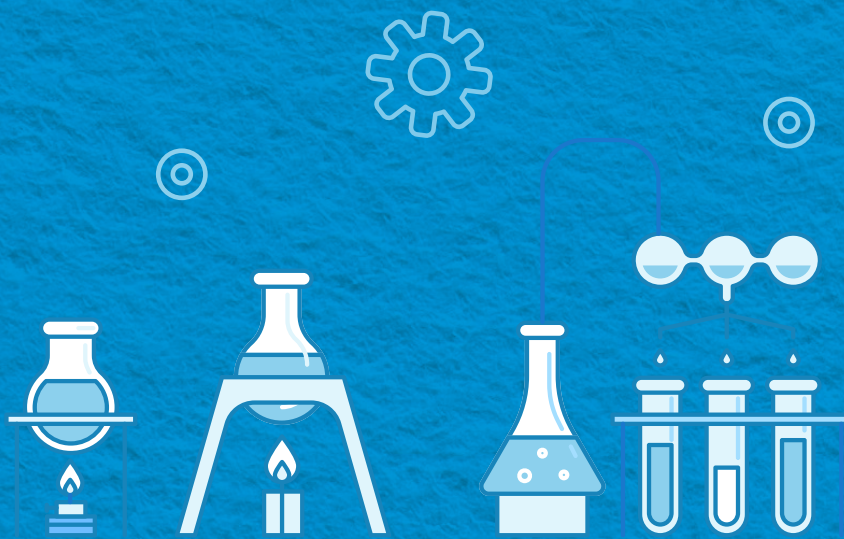
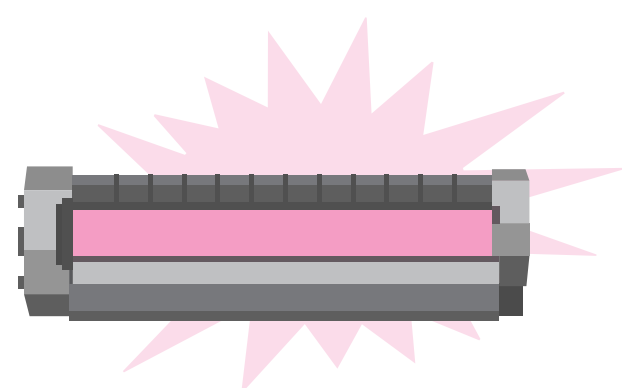


The Real Deal vs. Knock-Offs



70% of the printing technology in an HP laser printer comes from within the Original HP toner cartridge system itself



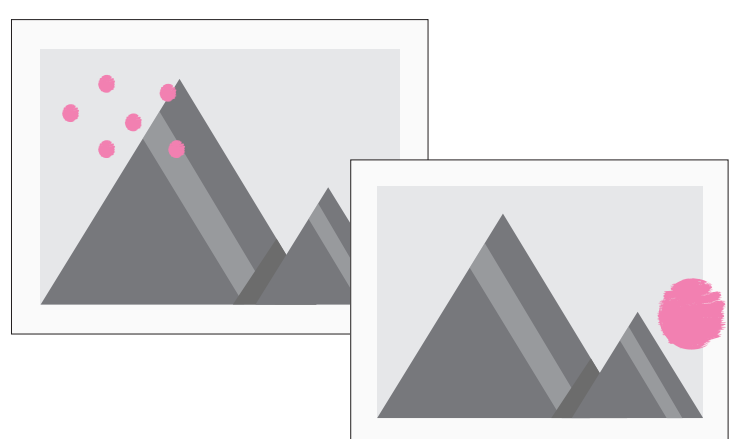
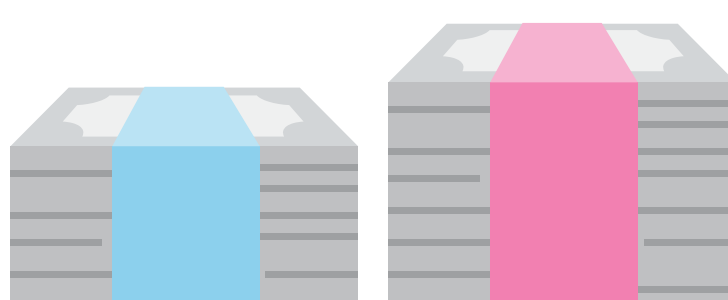
73%

of knock-off cartridges fail either right out-of-the-box or during use

Any savings you gain with non-HP toner cartridges today can cost

10% more

in the long-run when you take problem cartridges and reprinting into account

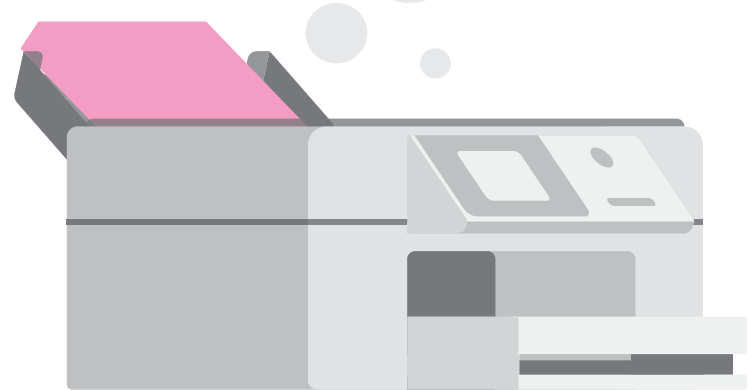


40%

of users of non-HP toner cartridges experience problems with them, including poor print quality due to smears, streaks, or dots

Using non-HP toner cartridges increases your chance damaging the printer by

30%



and printer downtime by

20%

Knock-offs use

40%

more energy and

54%

more fossil fuels which = 55% larger carbon footprint

90%

of knock-offs will go to landfill because manufacturers fail to collect their own products



HP offers easy recycling programs that have resulted in more than

199 
MM POUNDS

of recycled plastic since 2000 which has been used to manufacture new original HP ink and toner cartridges

References:

- <http://h20195.www2.hp.com/v2/GetPDF.aspx/4aa6-9296enw.pdf>
- <http://www.spencerlab.com/reports/HPReliability-NA-NBC2016NB.pdf>
- www.spencerlab.com/reports/HPReliability-NA-2016.pdf and www.spencerlab.com/reports/HP-CLR-Reliability-NA-2018.pdf
- www.photizogroup.com/na-customer-study-2017.pdf
- www.hp.com/go/NA-LJLCA-NBC-2018
- <http://www.spencerlab.com/reports/HPReliability-NA-NBC2016NB.pdf>
- www.hp.com/go/NA-2018InfoTrends

