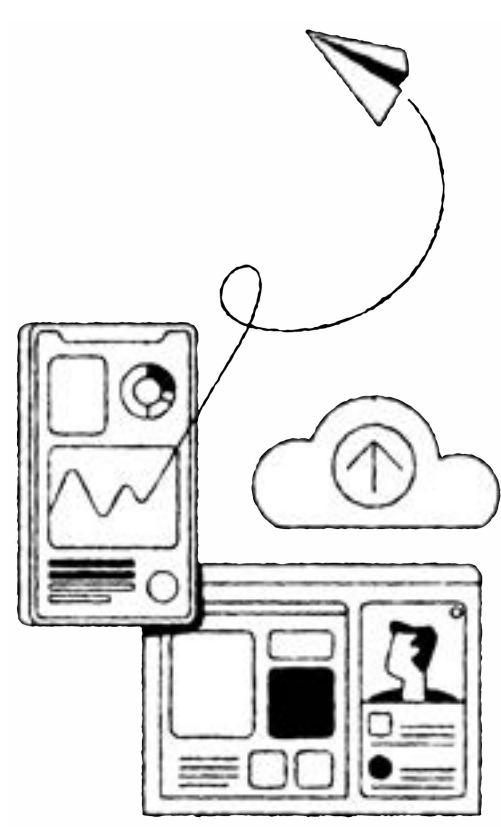
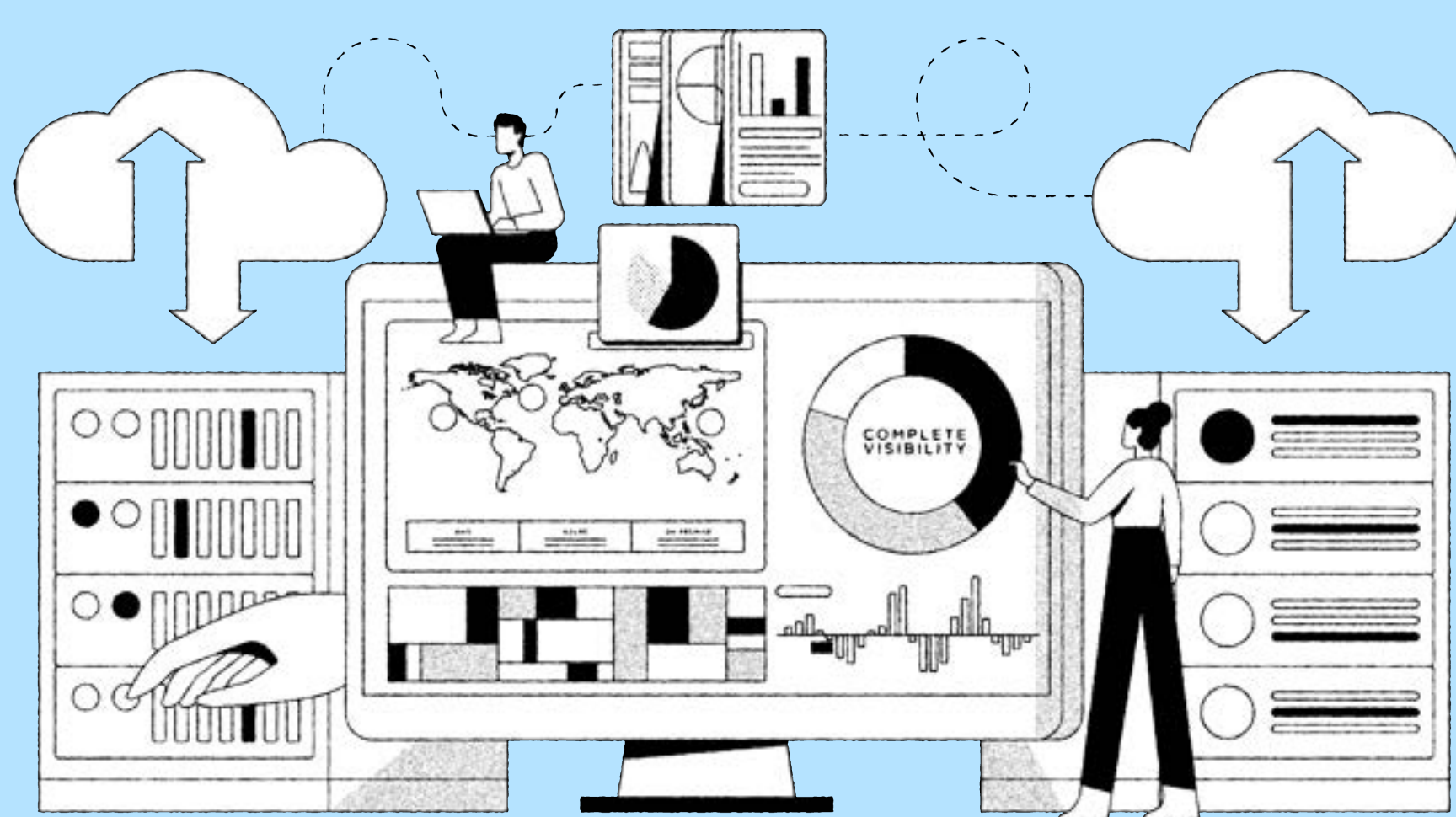


citrix

# Seven principles of the zero trust security model

The actions you need to take to insulate your business data from malicious activity



## 1: Secure all communication

Implementing perimeter-less security means authenticating everything, not picking and choosing when it's critical to evaluate intent. This provides the strongest possible security measures for any and all circumstances.

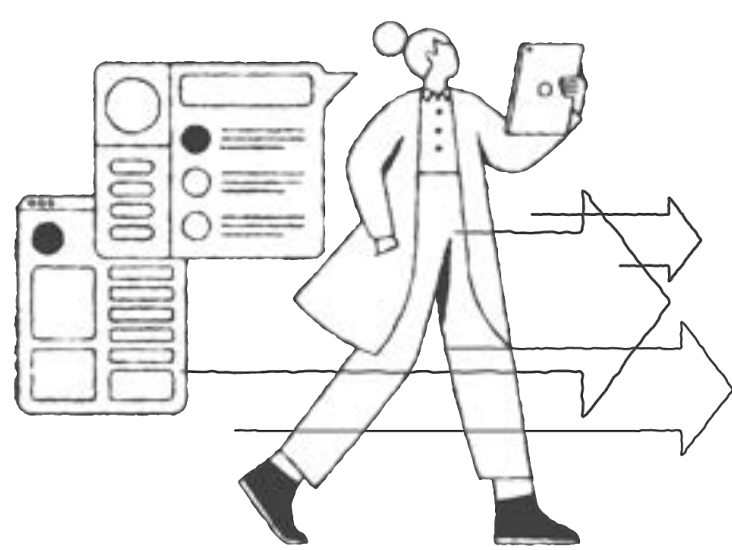
## 2: Evaluate on a per-session basis

Just because you trusted a device or identity from a previous session doesn't mean you should automatically grant immediate access the next time they access your infrastructure.



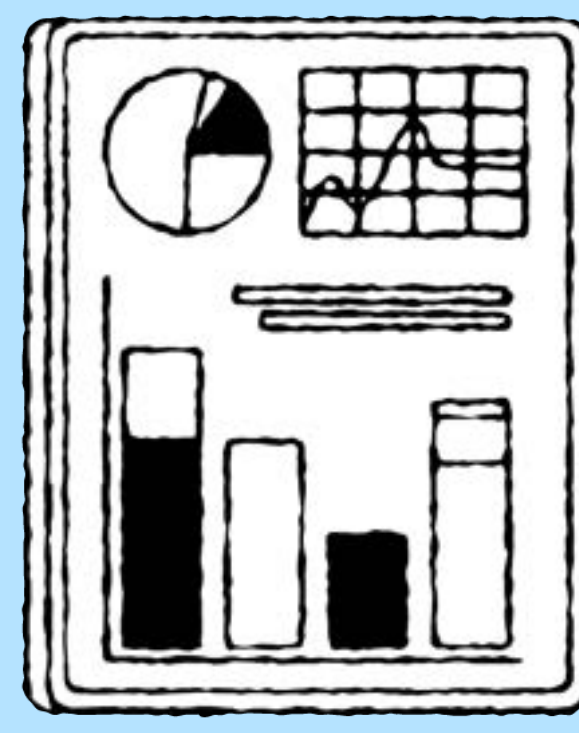
## 3: Keep an eye on your resources

To maintain line of sight into the security of the connected devices accessing your data, you should implement varied and compounding authentication protocols.



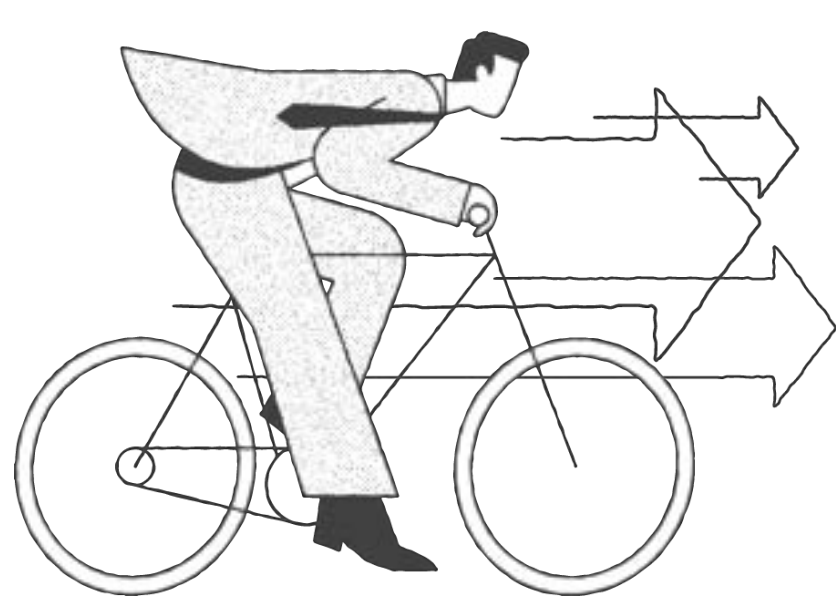
## 4: Monitor, measure, repeat

Continuous monitoring of enterprise apps allows you to safeguard your business against possible malicious entry from unauthorized users.



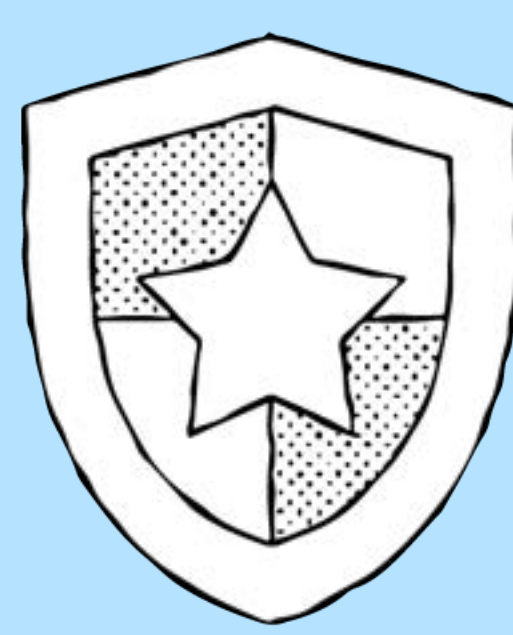
## 5: Be dynamic

The strongest models include dynamic, adaptable policies governing both behavioral and environmental attributes.



## 6: Enforce, strictly

By ensuring that your security checks are constant — and constantly evolving — your business is protected by an ongoing cycle of scanning users.



## 7: There's no such thing as "too much"

Today's IT infrastructure environments are subject to a near-constant stream of possible threats, and your business must maintain rigorous monitoring to stay ahead of potential vulnerabilities.



Work with your Citrix Partner to learn more about ZTNA solutions that put these principles into action and provide your business with valuable insight into how you're safeguarding your assets. With Citrix Secure Private Access, your employees will be able to safely work from anywhere in the world.

Learn more at [citrix.com/solutions/zero-trust-network-access/](https://citrix.com/solutions/zero-trust-network-access/)

citrix

Copyright© 2022 Citrix Systems, Inc. All rights reserved. Citrix, the Citrix logo, and other marks appearing herein are property of Citrix Systems, Inc. and/or one or more of its subsidiaries, and may be registered with the U.S. Patent and Trademark Office and in other countries. All other marks are the property of their respective owner/s.