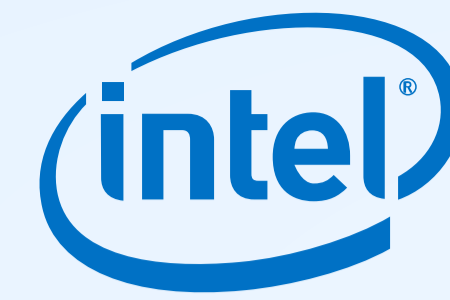


# Find Your Ideal Business Device



Looking to increase your productivity with performance and security? Follow the arrows to find the best device for your needs.

Start Here

Do you work in more than one location?

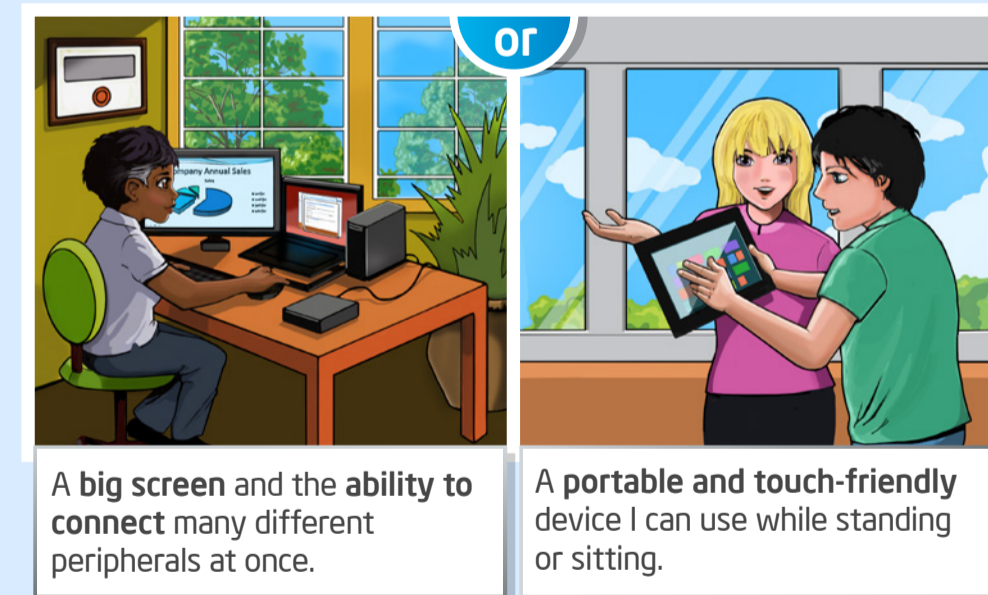


Yes. I am highly mobile, and work in many places including the office, home and while on the road. I need a highly portable, yet secure device.

I have an office, but I occasionally work from home or when on the road. A portable, yet secure device could make me more productive.

No. I work in one fixed location. Portability is not necessary, but security and reliability are essential.

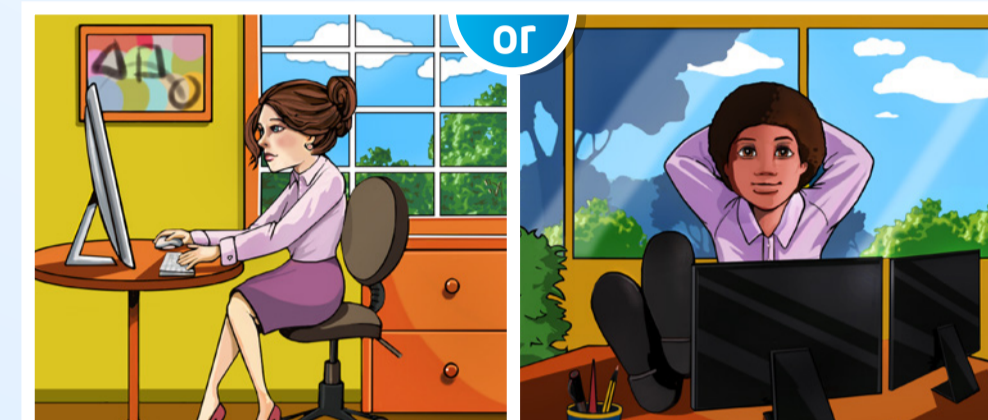
What would help you be more productive?



A big screen and the ability to connect many different peripherals at once.

A portable and touch-friendly device I can use while standing or sitting.

How could your cubicle or desk space be best utilized?



A PC that takes up less space, reduces desk clutter and offers enhanced security and productivity is what I need.

Space is not a main concern. Other things like connecting to a wide range of peripherals and ease of upgrading are important.

Would it be beneficial to have a PC that combines computer and display in one?



No. I want flexibility to mix, match and configure my computer and display separately.

Yes. It would reduce clutter and make for a more stylish workspace.

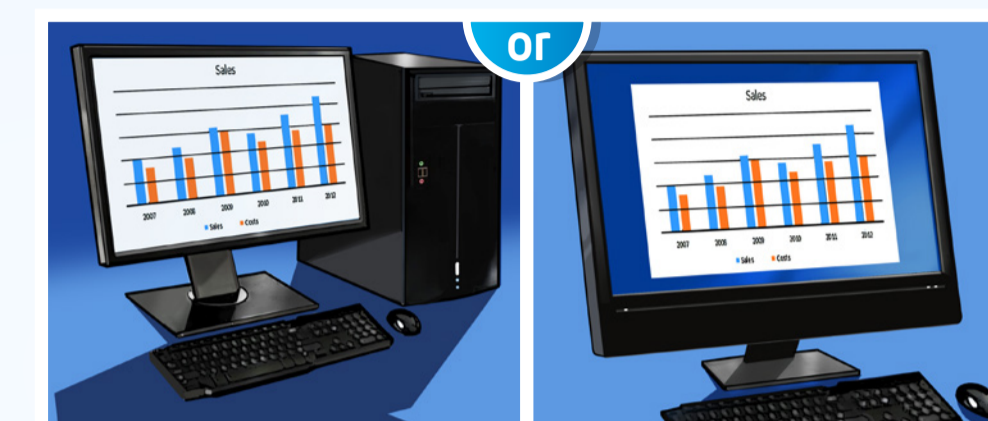
How important is weight, a thin design, responsiveness and battery life?



A top of the line device with maximum battery life, performance and the thinnest, lightest form would be ideal.

A more affordable device that doesn't have the additional features required by a robust work environment is well-suited to my needs.

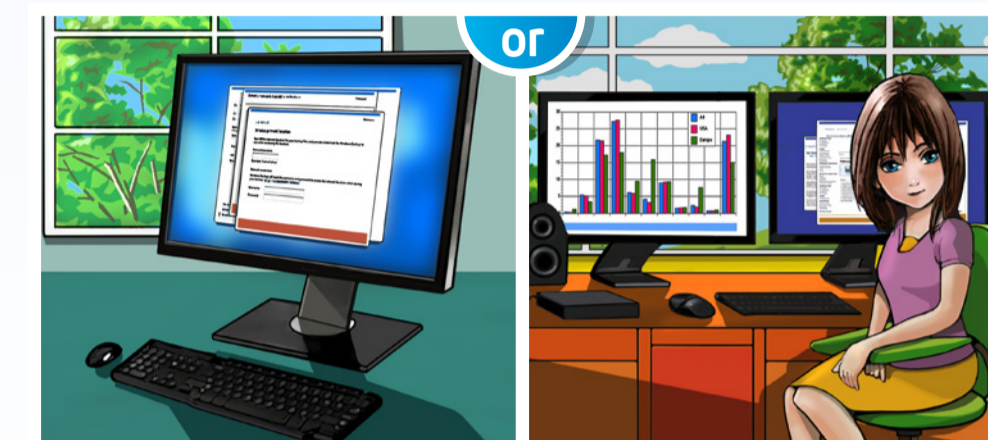
How do you want to interact with your PC?



I plan on only using a keyboard and a mouse.

Touchscreen, mouse and keyboard. I want a range of options.

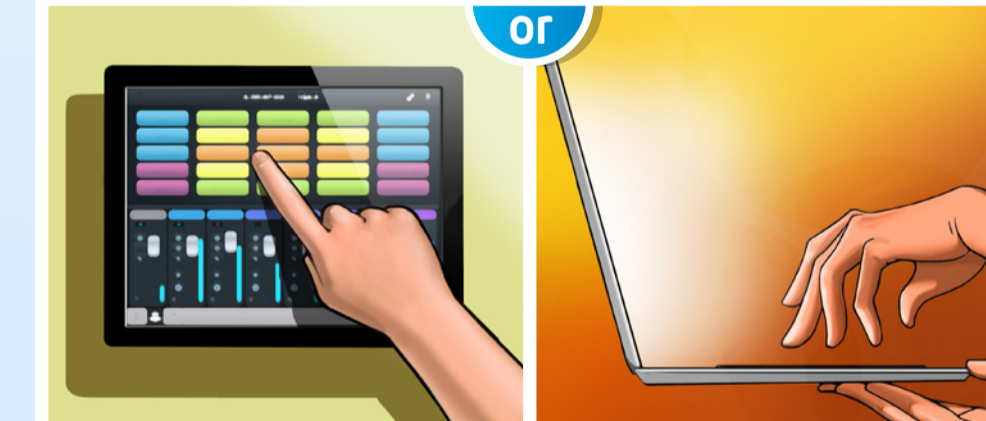
How important is style to you?



I am interested in a sleek, attractive design.

Not important.

Do you prefer a touchscreen or the option to choose between touchscreen and keyboard?



Touchscreen. I'm often on the go, so a touchscreen would be the best way to interact with my device.

A touchscreen and keyboard. I want the option to use both.

Will you mainly use this device as a PC or a tablet?



Tablet, but there are times where I would appreciate benefits enabled by a PC—like better battery life and performance.

PC, but there are times where I would like benefits enabled by a tablet—including enhanced mobility.

Consider an All-in-One



Consider a Tablet



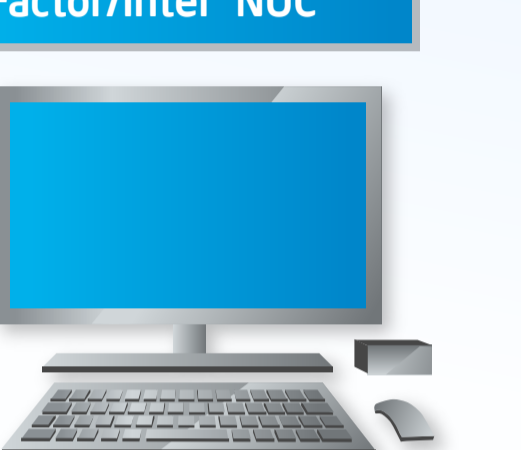
Consider an Ultrabook™



Consider a Desktop PC



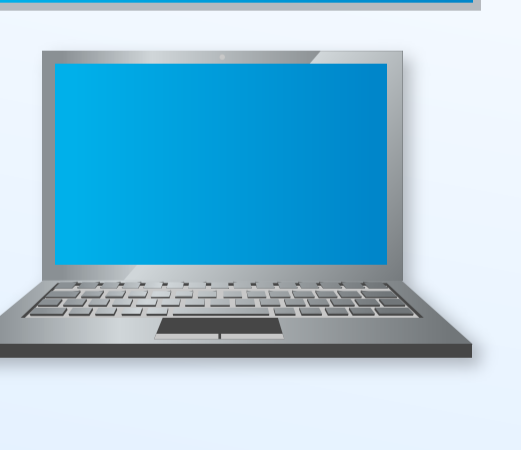
Consider a Small Form Factor/Intel® NUC



Consider a 2-in-1 Device



Consider a Notebook



Find the perfect fit for your unique business needs.

With next-generation Intel-based devices, security, enhanced productivity and touch-based interactivity are just the beginning.  
[intel.com/smallbusiness](http://intel.com/smallbusiness)