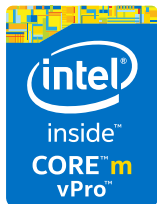




BUSINESSES NEED BUSINESS PCs



PCs with Intel® processors offer features that boost productivity and enable cost savings.

Do Consumer PCs Really Save Money?

To help cut costs, businesses have begun using consumer PCs with Windows* 8.1 Home. But this only generates additional costs from having to shoehorn consumer PCs into the IT infrastructure.¹ The solution is simple: Businesses need business-ready PCs with Intel® processors.



Consumer PCs generate 33% higher operational costs¹

Intel® processor-based business PCs deliver productivity and manageability features you won't find in consumer models.

Built to Withstand Daily Rigors

Business PCs are built with rugged materials to withstand wear and tear. Keyboards and hinges are thoroughly tested for intense everyday usage, so you know they'll last. If something does go wrong, business PCs come with up to three-year warranties and on-site technical support. Compare that to consumer PCs, which typically only have one-year limited warranties.² And, with Windows* 8.1 Pro and Windows* 10 Pro, business users can connect to corporate domains.



Three-year warranties, rugged materials, thoroughly tested²

These are just some of the reasons why business PCs excel at business.

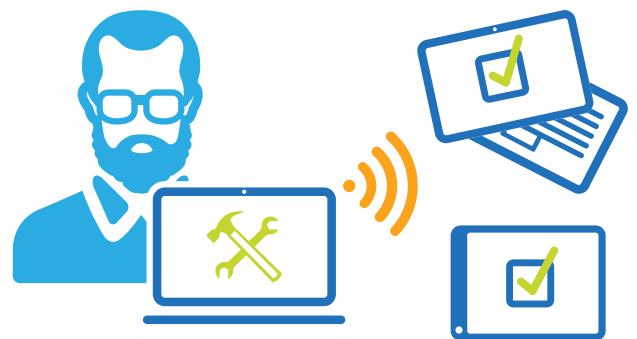


Activate Greater Manageability and Security

Looking for more reasons to choose purpose-built business PCs over their consumer counterparts? Intel® vPro™ technology was designed specifically for enterprise environments and offers an advanced toolset to empower users and streamline the IT department.

Intel® Active Management Technology

IT admins can remotely access and repair compromised PCs reducing user downtime from 8 hours to 10 minutes.³



Intel® Stable Image Platform Program

Platform components and driver sets will be stable for 15 months after platform launch. This helps reduce imaging costs associated with introducing new PCs to enterprise environments.



Intel® Pro Wireless Display (Intel® Pro WiDi)

Securely and efficiently project from a work PC to the conference room display. Connect in six seconds⁴ and collaborate without the wait. Users will need an enabled PC with: a 5th gen (or higher) Intel® Core™ vPro™ processor, Intel® Network Card, the downloadable application, and an enabled receiver.

Intel® Wireless Docking

Wirelessly and automatically connect a work PC to a keyboard, mouse, multiple displays, and other peripherals. Employees can get the full experience with a closed lid, or by putting the PC in standby, to save battery life. Users will need an enabled PC with: a 5th gen (or higher) Intel® Core™ vPro™ processor, Intel® Network Card, the wireless docking application, and a wireless dock receiver.



Consumer PCs can't cut it in the workplace. They're expensive to manage and have limited functionality without Windows* 8.1/10 Pro desktop applications. Discover a better way to work with business-ready PCs and Intel® processors.

Transform your enterprise at intel.com/betterwaytowork



Software and workloads used in performance tests may have been optimized for performance only on Intel microprocessors. Performance tests, such as SYSmark* and MobileMark*, are measured using specific computer systems, components, software, operations and functions. Any change to any of those factors may cause the results to vary. You should consult other information and performance tests to assist you in fully evaluating your contemplated purchases, including the performance of that product when combined with other products. For more complete information go to <http://www.intel.com/performance>

Intel® technologies may require enabled hardware, specific software, or services activation. Performance varies depending on system configuration. No computer system can be absolutely secure. Check with your system manufacturer or retailer or learn more at www.intel.com.

1. "BYOD: Hidden Costs, Unseen Value." Aberdeen Group, 2012. <http://blogs.aberdeen.com/communications/byod-hidden-costs-unseen-value/>

2. Warranties and support may vary depending on system manufacturer or retailer.

3. Source: "Change your desktops, change your business." Principled Technologies, 2015. <http://facts.pt/1H1ZLeY>

4. System test configuration details: Intel® Pro WiDi on Windows* 8.1 is on average 6,5 sec.: (Pro WiDi Adapter: Actiontec 2.2.8.1) – Systems Used: BDW-ULT Win8.1, Intel® Core™ i7-5500U CPU @ 2.40GHz, Intel® Dual Band Wireless-AC 7265, Windows 8.1 Ultimate x64 with Windows updates. Systems Used: HSW-ULT Win 8.1, Intel® Core™ i7-4600U CPU @ 2.10GHz, Intel® Dual Band Wireless-AC 7260, Windows 8.1 Ultimate x64 with Windows updates.

Copyright © 2015 Intel Corporation. All rights reserved. Intel, the Intel logo, Intel Core, Intel. Experience What's Inside, the Intel. Experience What's Inside logo, Intel Inside, the Intel Inside logo, and Intel vPro are trademarks of Intel Corporation in the U.S. and/or other countries.

*Other names and brands may be claimed as the property of others.