



Sighthound
Intelligence in Motion

DIGITAL SECURITY AND SURVEILLANCE WITH INTEL[®] NUC AND SIGHTHOUND VIDEO

MODERATED BY: PATRICIA SCHNAIDT, IOT SOLUTION PROVIDER, SITE EDITOR

PRESENTERS:

STEPHEN NEISH, CEO, SIGHTHOUND, INC.

IVAN LAPORTE, SOLUTIONS ARCHITECT, INTEL NUC



Disclaimer

Intel technologies' features and benefits depend on system configuration and may require enabled hardware, software or service activation. Performance varies depending on system configuration. No computer system can be absolutely secure. Check with your system manufacturer or retailer or learn more at www.intel.com

No license (express or implied, by estoppel or otherwise) to any intellectual property rights is granted by this document.

Intel disclaims all express and implied warranties, including without limitation, the implied warranties of merchantability, fitness for a particular purpose, and non-infringement, as well as any warranty arising from course of performance, course of dealing, or usage in trade.

This document contains information on products, services and/or processes in development. All information provided here is subject to change without notice. Contact your Intel representative to obtain the latest forecast, schedule, specifications and roadmaps.

The products and services described may contain defects or errors known as errata which may cause deviations from published specifications. Current characterized errata are available on request.

§ For more information go to www.intel.com/nuc and www.intel.com/computestick

Celeron, Intel, the Intel logo, Intel Atom, Intel Core, Intel Inside, the Intel Inside logo, Intel vPro and Pentium are trademarks of Intel Corporation in the U.S. and/or other countries

*Other names and brands may be claimed as the property of others.

© 2017 Intel Corporation.

Digital Security and Surveillance (DSS)



Cameras

2020 TAM:
~350Mu/year



Network Infrastructure



Central
Management,
Archive and
Analytics
2020 TAM: ~5Mu/year

Video Gateways
Servers & Recorders
'20 TAM: >20Mu/year



Video & Data
Analytics
Software & Services



Security &
Surveillance
Public Safety



Traffic Control
ADAS



Smart Home
& Building



Manufacturing
Robotics



Retail
Analytics



Healthcare



Infrastructure

MOVE TO HIGH DEFINITION CAMERAS

**INCREASED CONCERNS
OVER PUBLIC SAFETY**

**DEMAND FOR EDGE
BASED ANALYTICS**

Rising Tide of DSS Data



859 PETABYTES

Global Daily Data for Video Surveillance in 2017¹

124MU

Network Security Cameras
Forecasted for 2018²

46M

Network Security Cameras
Shipped in 2013²

MARKET DRIVERS

- Increasing value and ROI of IP Video
- Global growth in security & surveillance
- Move from SD analog to HD digital
- Adoption in Smart – Home – Building – Factory – Retail – Healthcare, and other markets

TECHNOLOGY DRIVERS

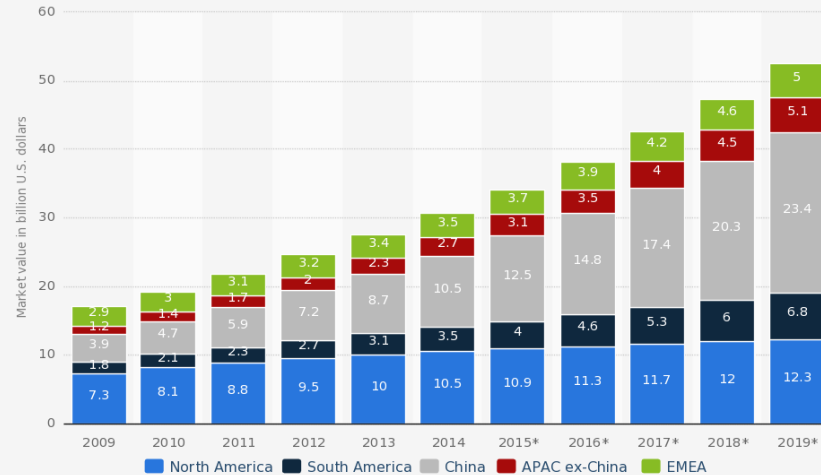
- Acceleration of open standard HW & SW
- Video Content Analytics (Computer Vision)
- Image Quality and Compression/Codecs
- Network: Remote Manageability and Mobility
- Cloud Services

¹IHS Research, Enterprise and IP Storage for Video Surveillance, 2013

²IMS Research, World Market for Video Surveillance Equipment, May 2015

DSS Market Trends

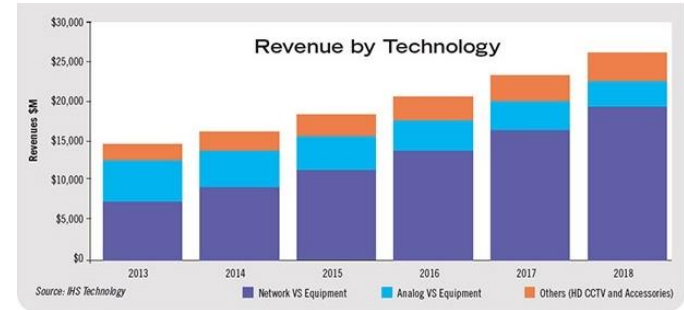
Size of the global video surveillance market from 2009 to 2019, by region (in billion U.S. dollars)



Source:
HKEnews
© Statista 2016

Additional Information:
Worldwide; Frost & Sullivan; 2009 to 2014

statista



- Major growth coming from Network (i.e. digital) Equipment
- IT convergence in the video surveillance industry
- Strong rise in the market for edge based analytic

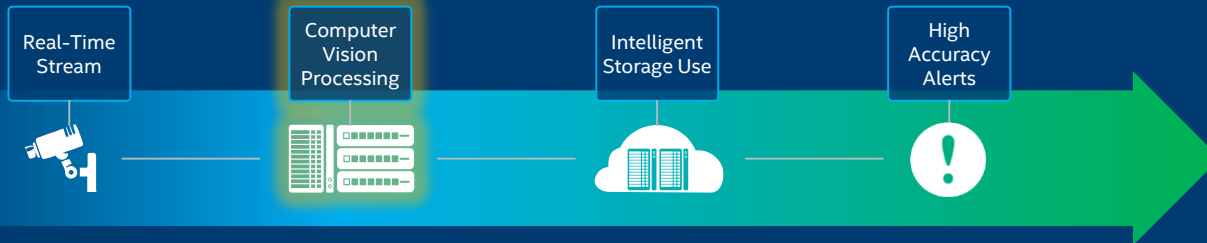
Pressing Need for Compute Power

CONVENTIONAL NETWORK VIDEO RECORDER (DUMB NVR)



Basic intelligence (in-camera detection)
Numerous false alerts
Storage space abuse
Difficult to navigate through archive

PC POWERED INTELLIGENT NETWORK VIDEO RECORDER (SMART NVR)



Advanced intelligence (computer vision)
Highly accurate people / object detection
Reduced & intelligent storage utilization
Events based archive navigation

INTEL® NUC: A PINT-SIZED POWERHOUSE



SIZE

Small footprint
or zero footprint



PERFORMANCE

Tower power



WARRANTY

International Warranty



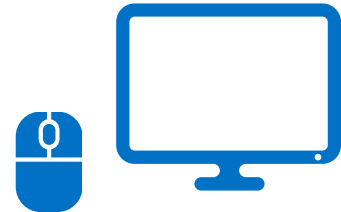
ENERGY EFFICIENCY

Low power
consumption



UPGRADEABILITY

Easily increase storage
and memory



REUSABILITY

Combine with new or
existing peripherals

Perfectly Fits Entry Size DSS Deployments



Performance for leading edge Computer Vision

Recorder (NVR) + security workstation in one

Tiny, so can be hidden discretely

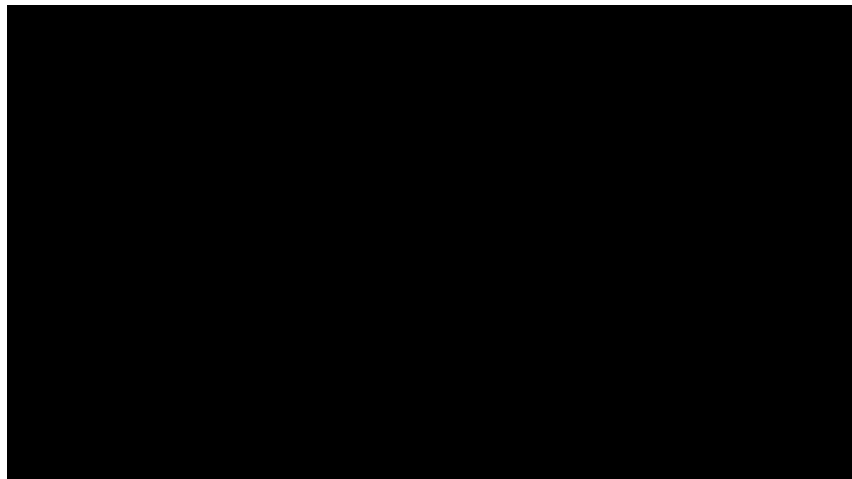
Fanless capable* (using 3rd party chassis)

Intel® vPro™ technology: security & remote manageability

Intel quality & reliability - 24/7 operation

* With 3rd party passive cooling chassis

Adding AI to Surveillance – Sighthound Video (<http://bit.ly/sighthound-adding-ai>)



Sighthound Video – Intelligent Monitoring and Alerts

(<http://bit.ly/sighthound-intelligent-monitoring>)



Sighthound Video

Features -

- Windows software with Android and iOS remote viewing
- Constantly monitors all connected cameras (IP or webcam)
- Uses computer vision AI to distinguish between people and other moving objects
- Cuts down on false alerts dramatically
- First launched 2010, updated state-of-the-art algorithms
- 500,000 users worldwide, active user group, forums and support

Sighthound Video - Intelligent Surveillance

Features



Easy Set Up

Software that finds your cameras automatically. You can go from install to running in under two minutes. [Learn More](#)



Smarter by design.

Computer vision in the software determines what's happening so you don't get hundreds of false alerts.



Video Search

Search through weeks of footage in seconds. Find only the moments that matter. [Learn More](#)



Rule Editor

With the Rule Editor, customize the video source, what gets analyzed, zones, and the types of alerts you'll receive. [Learn More](#)



IFTTT

Sighthound has partnered with IFTTT, a service that lets you create powerful connections. [Learn More](#)



ONVIF

ONVIF support for easy detection and configuration of compatible cameras. [Learn More](#)



Remote Viewing

iPhone and Android apps to monitor a live view of your home, show you clips of events, and provide you with alerts.



Alerts

Set rules that trigger mobile alerts, e-mails or custom scripts. Click the alert to see what happened. [Learn More](#)



HD Video

Match your video clips to any resolution your camera supports.



Multi-Cam Support

Sighthound supports almost every brand of IP camera and webcam out there. Don't get locked into one brand.



Custom Zones

Draw boxes around doorways to capture people entering a room, create thresholds on driveways to trigger people who cross, and mask areas of the scene to ignore.



Custom Schedules

Have upstairs cameras go off at night, yard cameras off on weekends and delay recording until you've left the house.



No Monthly Fees

Avoid cloud storage fees. Automatically upload only clips you care about to the free storage available at Google Drive, Dropbox or your preferred cloud service.



Sighthound Video - Intelligent Surveillance

- AI works like the human brain
 - Learns the scene
 - Watches the camera feeds
 - Decides if what it sees necessitates an alert
- Intelligence doesn't come cheap
 - Computer vision is computationally expensive
 - Requires CPU and fast disk access
- The ideal AI solution for surveillance will pack a lot of CPU power into a small, easy to deploy footprint

A Perfect Match



High accuracy people &
object detection



A pint-sized powerhouse for
leading edge computer vision

STATE-OF-THE-ART COMPUTER VISION SOLUTION

QUESTIONS?

Revenue & Margin Opportunities

*Hardware, Software,
Solution Deployment*



*Security & Cloud
Services Subscriptions*



*Upgrades, Extra
Equipment, Scale*



*Support and
Maintenance*



CHASSIS ECOSYSTEM – SEE FULL CATALOG [HERE](#)



IN-WIN



LIAN-LI



CARTFT



IYYAMA



NOW MICRO



SILVERSTONE



MOREX



SENECA



TRANQUIL



ABEE



POLYWELL



G-ALANTIC



CHENBRO



CADIA NETWORKS



IMPACTICS



LOGIC SUPPLY



AKASA



STREACOM

WHY BUY THE INTEL[®] NUC?

- **Intel is the innovation leader** in the mini PC category offering excellence in quality, reliability, and worldwide availability with the Intel[®] NUC product line.
- **Support:** worldwide customer service available 24/7 and in 11 languages and three year warranty.
- **Customization:** Intel NUCs are sold as barebones kits. It is fully customizable by integrators, and ready to accept the memory, storage, and operating system of their choice.
- **Size:** Intel NUCs are markedly smaller than the competition, from 0.4 to 0.7 L

INTEL® NUC

“Skull Canyon”



NUC6i7KYK

- Processor and Graphics** 6th Generation Intel® Core™ i7-6770HQ
2.6 GHz up to 3.5 GHz Turbo, Quad Core 6MB cache, 45W TDP
Intel® Iris™ Pro Graphics 580, 350 MHz up to 950 MHz
- RAM** Dual channel DDR4-2133+ SODIMMs, 1.2/1.35V, 32GB maximum
- Connectivity** Thunderbolt™ 3 (40 Gbps) and USB 3.1 Gen2 (10 Gbps) and DisplayPort 1.2 via USB-C connector
2x front USB 3.0 (one charging), 2x rear USB 3.0, 2x internal USB 3.0 and 2x internal USB 2.0 via header
Front Consumer Infrared port
- Video Outputs** HDMI 2.0 (4K 60Hz) and Mini DisplayPort 1.2 (4K 60Hz) and DisplayPort 1.2 via USB-C
- M.2 SSD and Flash Storage** 2x M.2 22x42/80 (key M) slots for SATA3 or PCIe X4 Gen3 NVMe or AHCI SSDs
SDXC slot with UHS-I support
- Networking** Intel® I219-LM 10/100/1000 Mbps Ethernet
Intel® Wireless-AC 8260 soldered-down, IEEE 802.11ac 2x2 + Bluetooth v4.2, internal antennas
- Audio** Up to 7.1 multichannel digital audio via HDMI or DisplayPort signals
3.5mm front headset jack, 3.5mm rear speaker / TOSLINK combo jack
- Enclosure** Metal and plastic with replaceable lid, Kensington lock with base security
- Dimensions (mm)** 211 x 116 x 28
- Power Adapter** 19V 120W power supply with replaceable AC cords
- Internal Headers** Common I/O header with Front Panel, CEC, 2x USB2.0 signals
2x USB 3.0 header
- Other Features** Microsoft Windows* 10, 8.1, 7 logo'd, compatible with various Linux distros
Second plain lid included
VESA mounting plate included
Individual retail packaging
Three-Year Warranty

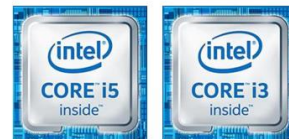


Skull Canyon Ordering Codes

Product Code	MM#	Notes
BOXNUC6i7KYK	944578	No AC cord
BOXNUC6i7KYK1	944579	US AC cord
BOXNUC6i7KYK2	944580	EU AC cord
BOXNUC6i7KYK3	944581	UK AC cord
BOXNUC6i7KYK4	944582	AU AC cord

INTEL® NUC

“Swift Canyon”



	NUC6i5SYH	NUC6i5SYK	NUC6i3SYH	NUC6i3SYK
--	-----------	-----------	-----------	-----------

Processor and Graphics 6th Generation Intel® Core™ i5-6260U
1.8 GHz up to 2.9 GHz Turbo, Dual Core, 4MB cache, 15W TDP
Intel® Iris™ Graphics 540, 300 MHz up to 950 MHz

6th Generation Intel® Core™ i3-6100U
2.3 GHz, Dual Core, 3MB cache, 15W TDP
Intel® HD Graphics 520, 300 MHz up to 1 GHz

Dimensions (mm) 115 x 111 x 48 115 x 111 x 32 115 x 111 x 48 115 x 111 x 32

2.5" SSD/HDD Bay 9.5mm, SATA3 None 9.5mm, SATA3 None

RAM Dual channel DDR4-2133 SODIMMs, 1.2V, 32GB maximum

Video Outputs Full-size HDMI 1.4b (4K 30Hz), Mini DisplayPort 1.2 (4K 60Hz)

M.2 SSD and Flash Storage M.2 22x42/80 (key M) slot for SATA3 or PCIe X4 Gen3 NVMe or AHCI SSD
SDXC slot with UHS-I support

Networking Intel® I219-V 10/100/1000 Mbps Ethernet
Intel® Wireless-AC 8260 soldered-down, IEEE 802.11ac 2x2 + Bluetooth v4.2, internal antennas

Connectivity 2x front USB 3.0 (one charging), 2x rear USB 3.0, 2x internal USB 2.0 via header
Front Consumer Infrared port

Audio Up to 7.1 multichannel digital audio via HDMI and Mini DisplayPort
3.5mm front headset jack

Enclosure Aluminum and plastic with replaceable lid
Kensington lock with base security

Power Delivery 12V – 19V DC input range
19V 65W wall-wart power supply with interchangeable plugs included

Other Features Microsoft Windows® 10, 8.1, 7 logo'd, compatible with various Linux distros
VESA mounting plate included
AUX_PWR internal header
Individual retail packaging
Three-Year Warranty

Swift Canyon Core™ i5 Ordering Codes		
Product Code	MM#	Notes
BOXNUC6i5SYH	943207	US, UK, EU, AU plugs
BOXNUC6i5SYHL	946874	CN, IN, BR, AR, KR plugs
BOXNUC6i5SYK	943204	US, UK, EU, AU plugs
BOXNUC6i5SYKL	946869	CN, IN, BR, AR, KR plugs

Swift Canyon Core™ i3 Ordering Codes		
Product Code	MM#	Notes
BOXNUC6i3SYH	943209	US, UK, EU, AU plugs
BOXNUC6i3SYHL	946884	CN, IN, BR, AR, KR plugs
BOXNUC6i3SYK	943211	US, UK, EU, AU plugs
BOXNUC6i3SYKL	946878	CN, IN, BR, AR, KR plugs

